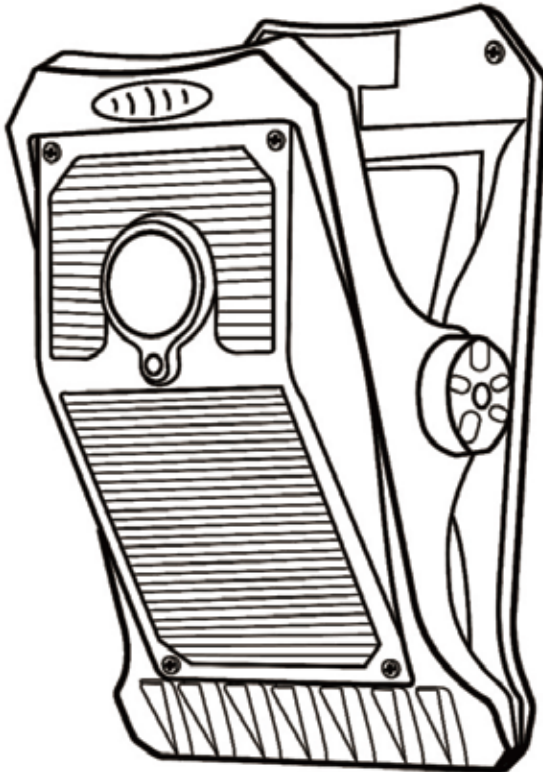




**ROVIN**

**SL3570**

# **Solar Panel LED Lamp with Clamp**



**IP44 Rated**

**INSTRUCTION MANUAL**

# Two charging ways : Solar power and Type-c



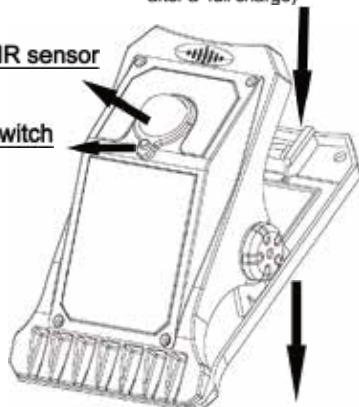
One free Type-c cable



Type-c Port(The red indicator is on when charging and off after a full charge)

② PIR sensor

③ Switch



① Solar panel

## Assembly Instructions

1. For the first time use or if the light has not been used for a long time, charge the light by placing it in **direct sunlight** for 1-2 days. At winter and cloudy day, the lights may not illuminate well due to the soft sunlight.
2. Before charging, press the switch button to turn ON the lights.
3. With the screws provided, attach the clip light to fence or wall. **Recommended height: 1.5-2.5 meters**

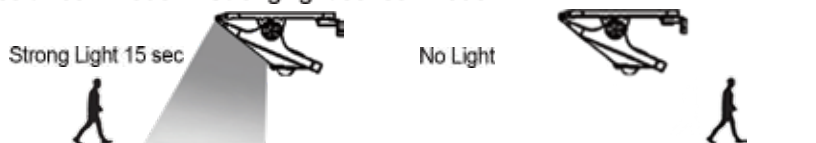
- ① Solar panel: To collect sunlight and charge the battery
- ② PIR sensor: For motion sensor function
- ③ Switch: ON / OFF

## How does these lights work?

① Press once - Mode 1: Strong light sensor mode & Dim light mode



② Press twice - Mode 2: Strong light sensor mode



③ Press third - Mode 3: Keep Dim light mode



**Mode 1:** It stays on dim mode at night and change to strong light mode for 15 seconds when detect motion.

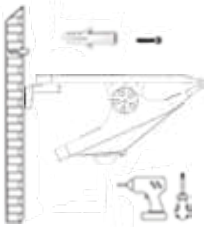
**Mode 2:** It will turn on strong light about 15 seconds when it detects motion and turn off automatically.

**Mode 3:** It turns on at night and stay dimly all night without motion sensor.



## How to install solar lights?

**IMPORTANT:** If you use the included transparent hooks to hang the solar light, please **CHECK** its adsorption performance at intervals to **KEEP SAFE** (The transparent hook **ONLY** use to stick on glass or tiles. Please remove the transparent film on the back of the transparent hook before using.)



**Option 1: Screw**



**Option 2: Use Transparent Hooks**

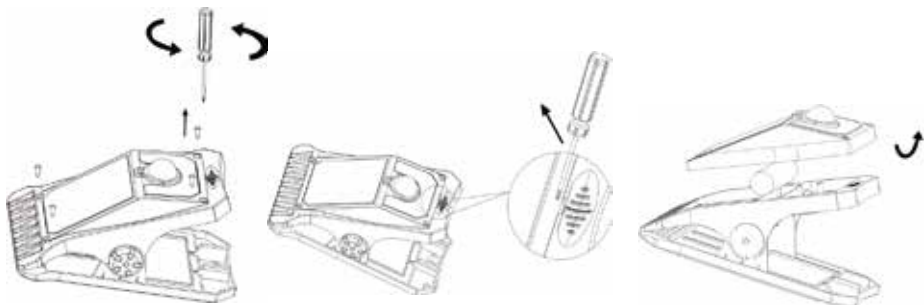


**Option 3: Clip**

## Replacing Rechargeable Battery?

The Li-ion Battery 18650 mah was included in the solar lights, and you do not need to install. If you want to replace the battery after some time using, please follow the below instructions.

- 1, Press the manual switch to the "OFF" position.
- 2, Screw open the back case and remove the old battery then replace it with a new Li-ion Battery 18650 rechargeable battery.



**Li-ion Battery 18650**

# Warranty Information

Our product is guaranteed to be free from manufacturing defects for a period of 12 Months.

If your product becomes defective during this period, Electus Distribution will repair, replace, or refund where a product is faulty; or not fit for intended purpose.

This warranty will not cover modified product; misuse or abuse of the product contrary to user instructions or packaging label; change of mind and normal wear and tear.

Our goods come with guarantees that cannot be excluded under the Australian Consumer Law. You are entitled to a replacement or refund for a major failure and for compensation for any other reasonably foreseeable loss or damage. You are also entitled to have the goods repaired or replaced if the goods fail to be of acceptable quality and failure does not amount to a major failure.

To claim warranty, please contact the place of purchase. You will need to show receipt or other proof of purchase. Additional information may be required to process your claim.

Any expenses relating to the return of your product to the store will normally have to be paid by you.

The benefits to the customer given by this warranty are in addition to other rights and remedies of the Australian Consumer Law in relation to the goods or services to which this warranty relates.

This warranty is provided by:

Electus Distribution

Address 46 Eastern Creek Drive, Eastern Creek NSW 2766

Ph. 1300 738 555