



RCI001

Mini Vacuum Food Sealer Pump

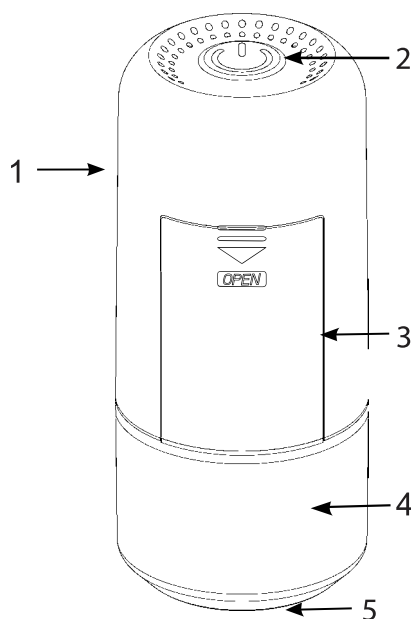


INSTRUCTION MANUAL

WARNING & SAFETY INFORMATION

- This product is intended for domestic use only and is not suitable for industrial applications.
- This product is not a toy. Keep it out of reach of children.
- Do not use this product on any part of the human body.
- Do not expose this product to liquids or allow any liquid to enter the device.
- If liquid appears in the water filter, stop using the product immediately and clean the filter. Continued use may damage the machine.

PRODUCT OVERVIEW



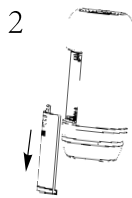
1. Pump
2. Switch
3. Battery cover
4. Water filter
5. Suction port

OPERATING INSTRUCTIONS

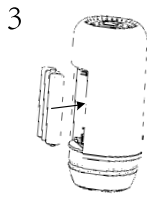
Battery Installation Steps



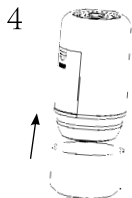
① Remove the water filter.



② Remove the battery cover.

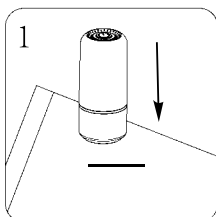


③ Put the battery into the battery compartment according to the positive and negative electrode identification of the battery.

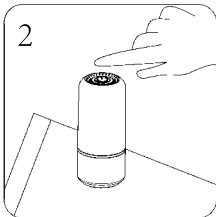


④ Install back the battery cover and water filter.

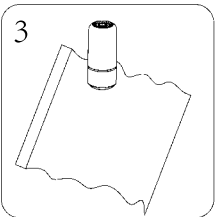
Instructions for food vacuum bag



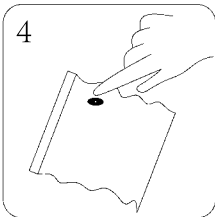
① Align the suction port with the air outlet of the storage bag.



② Hold the machine and gently press down, press the ON/OFF key to start.

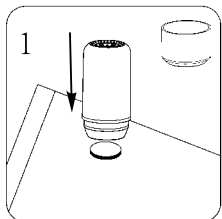


③ Wait until the vacuum state, press the ON/OFF key to close.

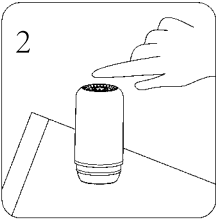


④ When suction is completed, press the suction port flat by hand.

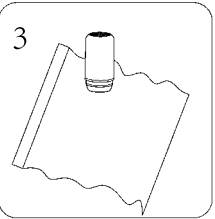
Instructions for use with storage bag



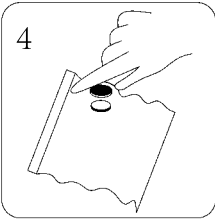
① Take off the water filter, and put the suction port in the storage bag



② Hold the machine and gently press down, press the ON/OFF key to start.



③ Wait until the vacuum state, press the ON/OFF key to close.



④ After suction is completed, tighten the sealing cover of the suction port by hand.

SPECIFICATIONS

Product size: 52mm x 119 mm
Battery: Requires 3 x AAA batteries (not included).
Vacuum degree: \geq -50kpa

WARRANTY INFORMATION

Our product is guaranteed to be free from manufacturing defects for a period of 12 Months.

If your product becomes defective during this period, Electus Distribution will repair, replace, or refund where a product is faulty; or not fit for intended purpose.

This warranty will not cover modified product; misuse or abuse of the product contrary to user instructions or packaging label; change of mind and normal wear and tear.

Our goods come with guarantees that cannot be excluded under the Australian Consumer Law. You are entitled to a replacement or refund for a major failure and for compensation for any other reasonably foreseeable loss or damage. You are also entitled to have the goods repaired or replaced if the goods fail to be of acceptable quality and failure does not amount to a major failure.

To claim warranty, please contact the place of purchase. You will need to show receipt or other proof of purchase. Additional information may be required to process your claim.

Any expenses relating to the return of your product to the store will normally have to be paid by you.

The benefits to the customer given by this warranty are in addition to other rights and remedies of the Australian Consumer Law in relation to the goods or services to which this warranty relates.

This warranty is provided by:

Electus Distribution

Address 46 Eastern Creek Drive, Eastern Creek NSW 2766

Ph. 1300 738 555