



Hard Shell Roof Tent

USER MANUAL

Please read this manual carefully before installation, and retain it for future reference.

TABLE OF CONTENTS

1. IMPORTANT INFORMATION	2
2. SAFETY WARNING	2
3. WARNINGS AND SAFETY INSTRUCTIONS	3-5
4. PARTS LIST	6
5. OPERATING INSTRUCTIONS	7
6. CARE AND MAINTENANCE	8
7. STORAGE AND HANDLING (OFF VEHICLE)	8
8. WARRANTY	9



IMPORTANT INFORMATION

- ROVIN is not liable for damage or accidents resulting from non-observance of the instructions, changes to parts, or the use of parts other than ROVIN's original parts.
- The warnings, safety and operating instructions in this manual cannot cover every imaginable situation, so it is the user's responsibility to exercise common sense and caution.
- It is your responsibility to pass these instructions on to third parties using this rooftop tent, including second-hand sales.



SAFETY WARNING

- KEEP ALL FLAME AND HEAT SOURCES AWAY FROM THE TENT MATERIALS.
- UNDER NO CIRCUMSTANCE SHOULD ANY NAKED FLAME SOURCES OR HEATING DEVICES BE USED INSIDE OR NEAR THE TENT.
- KEEP CAMP FIRES WELL AWAY FROM TENT.
- KEEP A LOOK OUT FOR ANY AIRBORNE BURNING EMBERS THAT MAY COME INTO CONTACT WITH THE TENT.
- KEEP A FIRE EXTINGUISHER OR WATER BUCKET NEARBY.
- **DO NOT** SMOKE WITHIN THE TENT.
- **DO NOT** OPERATE ANY DEVICE WHICH BURNS FUEL INSIDE OF THE TENT.
- KEEP EXIT CLEAR

WARNINGS AND SAFETY INSTRUCTIONS

Rooftop Tent:

- Before installing the ROVIN rooftop tent, **ALWAYS** refer to your vehicle and roof rack manuals and ensure that you are following their instructions and advice. It is recommended to carry your vehicle manual, roof rack manual and the user manual of this rooftop tent in your vehicle.
- **ROVIN** recommends that you should **NOT** transport your rooftop tent over 100km/h and that you adhere to speed limits.
- With the **ROVIN** rooftop tent, you should measure the overall height of your vehicle with the tent fitted as you will need this information to decide if the vehicle can enter car parks, etc.
- The attachment of the rooftop tent to your vehicle will alter its centre of gravity.
- Adjust your driving accordingly.
- At the beginning and regular intervals during each trip, please check that your tent is firmly installed by ensuring all nuts and bolts and all accessories are safely secured.
- **ALWAYS** check your tent is in a safe and appropriate place.
- **ONLY** open and close the rooftop tent when the vehicle is parked and stationary.
- **ALWAYS** ensure the tent is dry before closing. If this isn't possible, open immediately when you arrive at your home or next destination. Storing a wet tent can lead to the formation of mould & mildew.
- It is recommended to store your tent indoors if it's not going to be used for a long time. When storing indoors, be sure to place the tent on a padded surface and away from heavy loads and debris.
- Ensure that the roof rack or roof bars can support the full weight of the rooftop tent while in motion. Ensure the rooftop tent's weight is centred over the middle of the vehicle and its sides are not overhanging the vehicle.
- **DO NOT** use your rooftop tent if there is any visible damage to any part or its components, instead, contact **ROVIN** to see how we can help.
- Incorrectly mounted roof racks, rooftop tent or cross bars can come loose during travel and cause serious accidents.
- Make sure you give due consideration to the change in your vehicle height and driving behaviour (e.g. wind sensitivity, corner and braking behaviour) to accommodate the change in vehicle height.

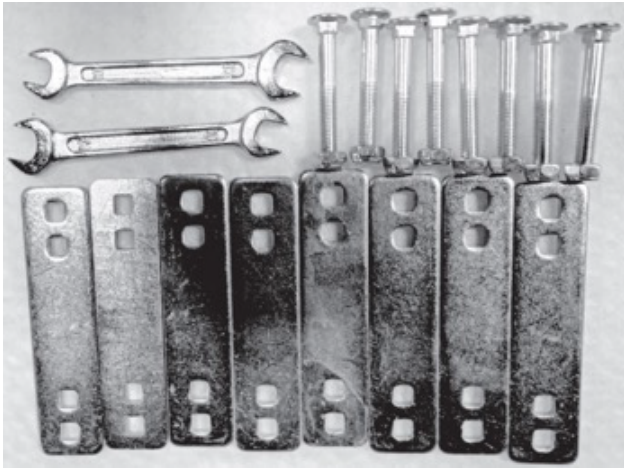
- **NEVER** force any of the components which could result in damage when opening and closing the tent. Metal components may need to be cleaned with a brush or soft cloth to ensure proper operation.
- **DO NOT** use cleaning fluids containing bleach, alcohol or ammonia or any other chemicals that would otherwise damage your tent.
- **DO NOT** drill holes in the ladder. This will weaken the structure of the ladder and can cause injury.
- **NEVER** leave the tent open for a long time where insects, rodents, or moisture could occur, and regularly inspect your tent for damage and check the hardware for signs of rust.
- Keep children away from a stored tent, and ensure it can't be tipped over accidentally.
- Be aware of low entrances, low-hanging branches, and other hazards that could damage your rooftop tent or vehicle.
- When washing your vehicle, your rooftop tent must be removed first.
- For reasons of fuel economy and the safety of other road users, your roof tent and roof rack should be removed when not in use.
- Keep **ALL** flame and heat sources away from the tent. Under **NO** circumstance should **ANY** naked flame sources or heating devices be used inside the tent.
- Stay alert for **ANY** airborne burning embers that may come into contact with the tent. Keep a fire extinguisher or water bucket nearby.
- **DO NOT** smoke within the tent.
- Keep **EXIT** clear.

Telescopic Ladder:

- Make sure that each section is pulled up to its full extension and is locked before continuing to the next section. Improper locking will lead to bodily injuries.
- **NEVER** open the ladder from the top unless extending to its maximum length.
- **NEVER** exceed the permissible load capacity of the telescopic ladder. The telescopic ladder has a permissible load capacity of **MAX.** 150 kg.
- **ALWAYS** face the ladder during use.
- Wear non-slip footwear when using the ladder.
- Use both hands to grip the ladder when ascending and descending.
- **DO NOT** attempt to extend or retract the ladder while climbing or standing on it.
- Place body weight in the middle of the rung to ensure stability.
- Equipment carried while using a ladder should be light and easy to handle.
- **DO NOT** use the ladder as a bridge.
- **DO NOT** use the ladder in windy environments
- Check before every use the proper function of the locking mechanisms. If the locking mechanisms are not working properly, **DO NOT** use the ladder.
- Before using the ladder all the extended rung sections must be locked.
- **DO NOT** use the telescopic ladder under the influence of pharmaceuticals, drugs, alcohol, etc. or if you feel unwell.
- Remove dirt on the telescopic ladder, such as wet paint, oil or snow before use.
- **DO NOT** use the telescopic ladder upside down.
- The telescopic ladder is **ONLY** to be used by one person at a time.
- Avoid leaving an unsecured ladder at the top.
- Avoid excessive lateral loads, such as carrying up heavy loads or drilling sideways in solid materials
- **DO NOT** spend long periods without regular breaks on the telescopic ladder.
- Fatigue and loss of balance are accident hazards.
- **ALWAYS** stand with both feet on one rung.
- When climbing in and out of your rooftop tent, **ALWAYS** use the ladder with caution and **NEVER** let children use it unsupervised. Make sure the ladder hooks are in good condition.

PARTS LIST

1. 1 PC(s) Rooftop Tent (Telescopic Ladder Included)
2. 8 PC(s) Flat Brackets
3. 8 PC(s) Bolts & Nuts
4. 2 PC(s) Wrenches
5. 1 PC(s) User Manual

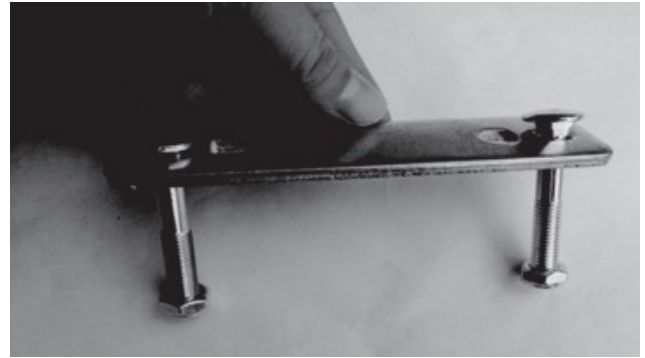


OPERATING INSTRUCTIONS



STEP 1:

Lift the rooftop tent onto your vehicle's roof rack. Position so that the weight is centred evenly over the roof.



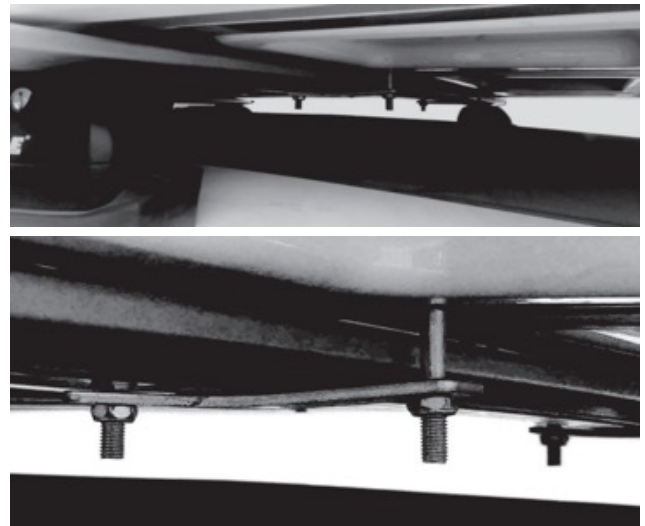
STEP 2:

Assemble 4 of the flat brackets with 2 bolts each.



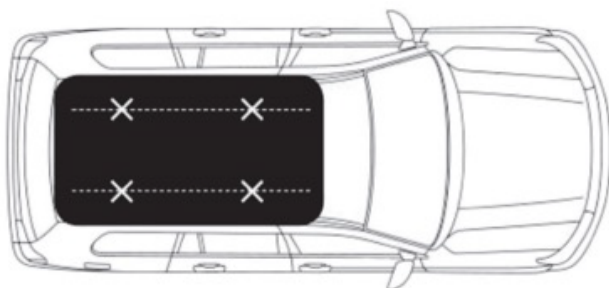
STEP 3:

With the flat brackets assembled, lift the side of the rooftop tent and slide 2 flat brackets with bolts along each mounting rail. Slide the flat brackets with bolts along the mounting rails.



STEP 4:

Connect the 4 remaining flat brackets with 2 nuts each. Tighten all the nuts, making sure the Rooftop Tent is firmly mounted and will not move. The flat brackets should have a slight bend around the crossbar.



STEP 5:

The rooftop tent should have 4 spaced, strong points of contact on the roof rack.

STEP 5:

Take the vehicle for a low-speed, short drive.

Afterwards, ensure that all of the bolts are secure. Tighten if required

CARE AND MAINTENANCE

The **ROVIN** rooftop tent is designed to be a reliable companion on your adventures. To keep it performing at its best, ROVIN recommends some care and maintenance steps that will help prolong its life.

Before each use, inspect your rooftop tent mounting hardware. If necessary, clean with wet cloth.

Dry your rooftop tent thoroughly before you close it. If unable to properly dry your rooftop tent before closing, open it up and air dry it at your next opportunity. Failure to properly dry your tent out can lead to the growth of mould and mildew which can degrade the tent material, and cause discolouration, and foul odour. Mould and mildew growth are not covered under your rooftop tent warranty.

To clean your rooftop tent, use cold water and a sponge.

DO NOT use soap or detergent. Rinse with a clean wet sponge and allow to thoroughly dry.

DO NOT expose to petrol, oil or solvents.

STORAGE AND HANDLING

- Ensure it is fully dry before storage and store in a cool dry location free from sunlight.
- Zippers should be pulled with even force and in a gentle manner. Keep your zippers free from dust and dirt and periodically apply non-scented beeswax to the zipper teeth as lubrication. This will prolong the life of your zippers.
- The Ladder should be wiped free of any dirt or dust prior to collapsing the tent.
- Keep your mattress dry and free from dirt. Prior to closing your rooftop tent lift your mattress and ensure the underside is dry. Remove the mattress and air dry if necessary. To clean the mattress cover, remove the cover and machine wash by gentle cycle. Hang dry, **DO NOT TUMBLE DRY.**
- You should ALWAYS wipe your ladder free of any dust or dirt prior to collapsing it for storage. Failure to do so can result in debris contacting your tent which can lead to damage to your tent fabric.

WARRANTY

Our goods come with guarantees that cannot be excluded under the Australian Consumer Law. You are entitled to a replacement or refund for a major failure and for compensation for any other reasonably foreseeable loss or damage. You are also entitled to have the goods repaired or replaced if the goods fail to be of acceptable quality and the failure does not amount to a major failure. The benefits provided to you as the consumer by this warranty are in addition to other rights and remedies available to you under the law.

EXCLUSIONS:

This warranty does not cover defects, failure or damage caused by incorrect installation, intentional damage, misuse or abuse. It is recommended that the installation should be performed by suitably qualified technicians or the warranty will be voided. For further clarity, this warranty is also void if the rooftop tent:

- is repaired, altered or modified carried out by anyone other than ROVIN, or without ROVIN's authorization,
- is damaged by mould and mildew as the tent is not properly dried prior to closing,
- is damaged by extreme weather (e.g. storm, hail or strong wind), extreme temperature, accidents, negligence, daily wear and tear, incorrect setup, or failure to check the condition of the tent before each use,
- is damaged by UV degradation or acid rain to the tent/awning and its components,
- is damaged from improper storage, or a failure to provide routine maintenance,
- is used on permanent sites or commercial displays.

WARRANTY PERIOD:

Full 12 month warranty from date of purchase against all manufacturing defects. To make a claim please ensure you retain your receipt and contact the place of purchase.



Distributed by:
Electus Distribution Pty Ltd
46 Eastern Creek Dr,
Eastern Creek NSW 2766 Australia
Ph 1300 738 555
www.electusdistribution.com.au