

RESPONSE

QM3842

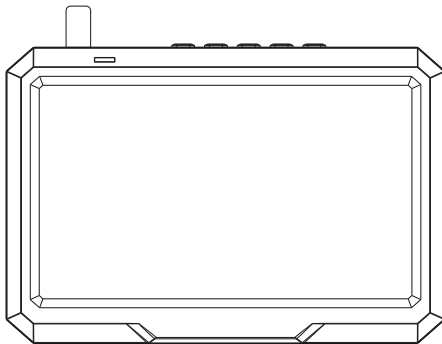
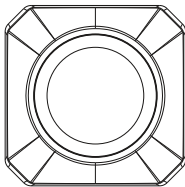
Digital Wireless
Reversing Camera Kit



Instructional Manual

PRODUCT FEATURES:

1. On-Screen Backup Guideline
2. 2.4GHz Digital Wireless Technology
3. 12/24VDC Operation
4. 100m Line Of Sight Transmission Range
5. IP68 Waterproof Camera
6. Easy to install.



SPECIFICATIONS:

Specifications:	Monitor
LCD Size:	5"
Resolution:	800 x 480 pixels
Brightness:	500cd/m
Power Supply:	9-30VDC
Dimensions:	132.5(W) x 89.5(H) x 22.5(D)mm

Transmission Range: Max. 100 meters line of sight.

Specifications:	Camera
IP Rating:	IP68, Waterproof
Resolution:	550 TV Line
Minimum Illumination:	0Lux [IRON]
View angle:	110°
Power Supply:	9-30VDC
Dimensions:	27(W) x 25(H) x 25(D)mm

BOX CONTENTS:

- 1 x 5" Monitor
- 1 x Camera
- 1 x Monitor charger cable
- 1 x Camera power cable
- 1 x Monitor mounting bracket
- 1 x Camera fixing bracket
- 3 x Power cord connection buckle
- 4 x Cable ties
- 1 x User Manual

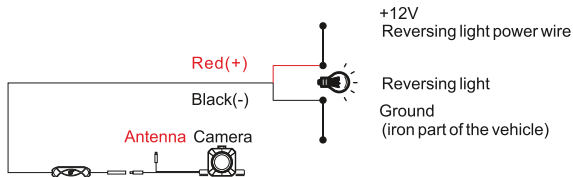
PRODUCT INSTALLATION:

1. CAMERA INSTALLATION

Step 1: Connect the camera cable and camera power cable.

Step 2: Find the channel hole of the camera power cord. Look for an opening/drilling near the license plate of the vehicle to insert the connector cable plug of the camera into the vehicle interior.

Step 3: Find the positive and negative power supply of the reversing light. Then carefully strip the red wire, then connect the red wire of the camera cable to the positive pole of the reversing light, and then ground the black wire of the camera.



PRODUCT INSTALLATION:

Step 4: Remove the license plate.



Step 5: Align the mounting hole of the camera bracket with the mounting hole of the license plate, then assemble the license plate, and then tighten the screws to fix the license plate.

Step 6: Use cable ties to fix the wires. Use cable ties to fix the wires to the rear bracket.

NOTE: Due to the differences in technology and design related models, these instructions do not apply to all models.

PRODUCT INSTALLATION:

2. MONITOR INSTALLATION

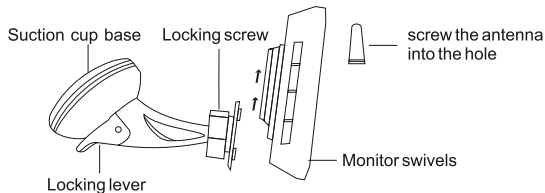
Step 1: Connect the antenna to the wireless monitor.

Step 2: Open the locking screw and adjust the monitor to the desired viewing angle, then tighten the locking screw to fix the monitor.

Step 3: Clean the area where the suction cup base is to be connected to the windshield or dashboard. Now press the suction cup base onto the windshield or dashboard and move the lock lever to the suction cup base.

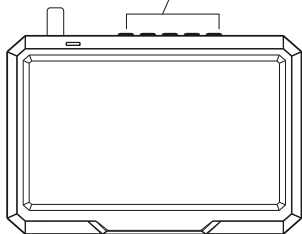
Step 4: Connect the monitor to the car charger.

Step 5: Plug the car charger into the car socket 12V, and route the cable around the edge of the windscreen to avoid collision or endanger the safety of the vehicle and its passengers.



NOTE: The position of the display should not affect the driver's field of vision. Observe the laws and safety regulations applicable to the vehicle.

OPERATING INSTRUCTIONS:



1. MONITOR CONTROL SETTINGS

- ① Reversing guidelines (ON/OFF)
- ② Image display (Normal/Mirror)
- ③ Menu Mode (Brightness/Contrast)
Use the (+) and (-) buttons to adjust settings.
The Menu option will disappear after approx. 3 seconds. Press the (M) button to enter next option or exit.
Hold the (M) button down for approx. 3 seconds to perform code matching with the backup camera.

OPERATING INSTRUCTIONS:

2. TURNING ON MONITOR

After plugging the car charger into the car's 12-volt power outlet, just start the car to turn on the display. When the camera is not turned on, the display will turn off automatically after 3 seconds, and the display indicator will light up red. When the camera is turned on, the monitor will automatically turn on, and the monitor indicator will light up blue.

3. CODE MATCHING

Normally, the monitor is paired with the backup camera before leaving the factory, and you can find them in the same package. The purpose of this mode is limited to pairing with a new backup camera when the old camera needs to be replaced due to malfunction or damage.

Please make sure that the backup camera and monitor are turned on, the pair button will not work while the indicator light is red & the monitor is in standby mode. At this time, you need to press any button to turn on the display, and then press the (M) button to pair.

OPERATING INSTRUCTIONS:

4. PAIRING STEPS

Step 1: Power on the monitor and camera.

Step 2: Press the (M) key for 3 seconds to enter pairing mode. The display will show "pairing" and it will automatically complete the pairing process with the camera. After the pairing is successful, the monitor will display real-time footage from the camera.

Step 3: After the reversing camera is correctly connected to the reversing lights, it will automatically turn on when you put your vehicle in reverse gear. In this mode, a guide will be displayed on the display to help reverse the car.

TROUBLESHOOTING:

- 1.** The red light of the monitor is off: check whether the car charger is plugged in.
- 2.** The red light on the monitor is on but there is no video image: check if the power cord of the camera is properly connected.

WARRANTY INFORMATION:

Our product is guaranteed to be free from manufacturing defects for a period of 12 Months.

If your product becomes defective during this period, Electus Distribution will repair, replace, or refund where a product is faulty; or not fit for intended purpose.

This warranty will not cover modified product; misuse or abuse of the product contrary to user instructions or packaging label; change of mind and normal wear and tear.

Our goods come with guarantees that cannot be excluded under the Australian Consumer Law. You are entitled to a replacement or refund for a major failure and for compensation for any other reasonably foreseeable loss or damage. You are also entitled to have the goods repaired or replaced if the goods fail to be of acceptable quality and failure does not amount to a major failure.

To claim warranty, please contact the place of purchase. You will need to show receipt or other proof of purchase. Additional information may be required to process your claim.

Any expenses relating to the return of your product to the store will normally have to be paid by you.

The benefits to the customer given by this warranty are in addition to other rights and remedies of the Australian Consumer Law in relation to the goods or services to which this warranty relates.

This warranty is provided by:

Electus Distribution

Address 46 Eastern Creek Drive, Eastern Creek NSW 2766

Ph. 1300 738 555

NOTES:

Distributed by:
Electus Distribution Pty Ltd
46 Eastern Creek Dr,
Eastern Creek NSW 2766 Australia

1300 738 555
www.electusdistribution.com.au

Made in China