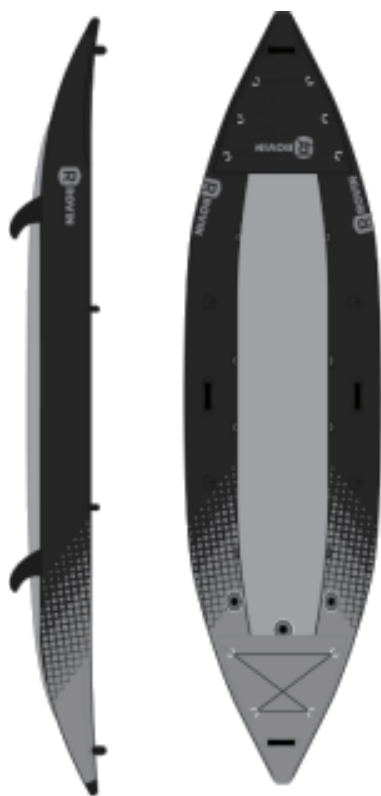




MMA020

Inflatable Kayak



INSTRUCTION MANUAL

CONTENTS

General Information & Safety Instructions.....	4
Package Contents.....	5
Inflation & Assembly	5
Valves	6
Assembly of Standard Fins	7
Disassembly	7
Valve Maintenance	8
Leak Detection.....	8
Repair Kit.....	9
Specifications	11
Warranty Information.....	12

GENERAL INFORMATION & SAFETY INSTRUCTIONS

- This kayak is designed for inshore and calm water use. Use only during daylight hours and within 300m of shore.
- Wearing a life jacket is strongly recommended. It is especially important that children and non-swimmers wear a personal flotation device at all times. Children and non-swimmers require special instruction in the use of personal flotation devices.
- This device is not a rescue device. Use only under competent supervision. Never let anyone jump in this product. Never leave it in or near water when not in use. Never tow it from any vehicle. Assembly and use must be done by an adult.
- Adults should inflate the chambers in order of numbering.
- Excessive inflating of the kayak can burst the chambers or cause damage to the welded seams. Failure to follow the operating instructions, can result in capsizing and drowning.
- Be careful when getting on and off the kayak. Enter through the center of the kayak for maximum stability. Evenly distribute the weight of passengers, gear and accessories, so the kayak is level front to back and side to side. Uneven distribution of people or loads in the kayak can cause capsizing and drowning.
- Do not use your kayak if you suspect a puncture or a leak.
- Do not leave children unattended in the kayak. Make sure that at least one responsible adult is around children and those who cannot swim at all times.
- Always keep the appropriate kayak safety equipment in an easily accessible location on your kayak.
- The total number of people and the total weight must not exceed 180kg. Some household cleaning solvents, chemicals, and other liquids (such as battery acid, petroleum, and gasoline) can damage PVC fabric. In the event of improper handling or contamination by such a product, you must check for leaks and check the structural integrity.

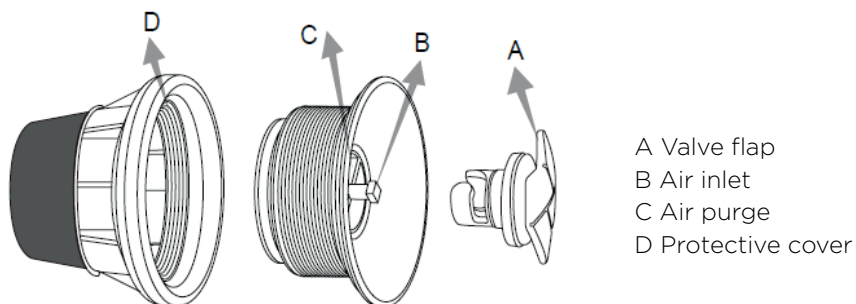
WARNING: The manufacturer is not responsible for any potential injury from misuse

PACKAGE CONTENTS

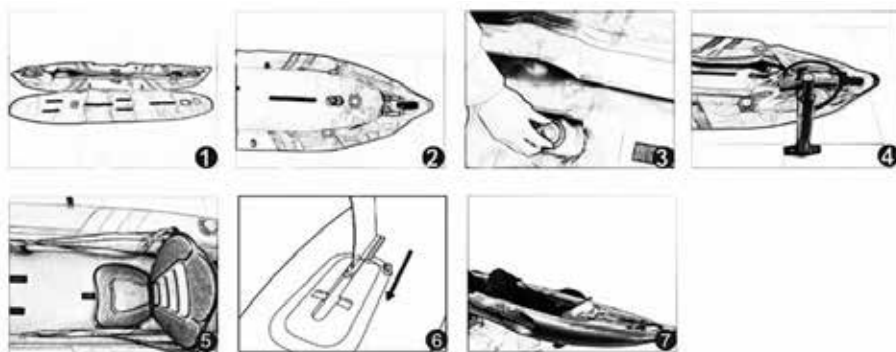
- 1 X Kayak
- 1 x Manual
- 1 x Repair Kit

WARNING: Before removing the kayak from the packaging, make sure that there are no sharp objects where the kayak will be inflated. Make sure all included parts are in the box.

INFLATION & ASSEMBLY

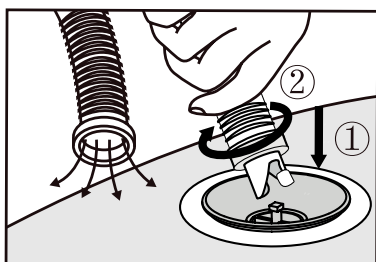


1. Unfold the kayak.
2. Insert the inflatable Floor into Kayak body
 - Put the inflatable floor above the tubes properly.
 - Make sure the drain plug on the Kayak align the center of the hole on inflatable floor
 - Insert the inflatable floor under the Kayak tube
3. Check the valves and the water drain plug, which should be in the closed position
4. Inflate the floor (8PSI), then inflate the tubes of the Kayak(3.5PSI) respectively and in order
5. Attach the strip of seat on tube side by hooks.(Seat sold separately)
6. Install the fin on the bottom of Kayak
7. Install the paddle. The paddle can be fixed on tube side by 2 velcro paddle holders. (Paddle sold separately)

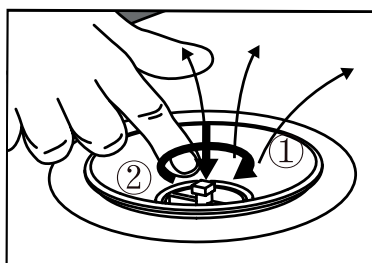


The outside temperature as well as the water influences the pressure of the kayak. Adjust the pressure accordingly: in cold weather the kayak loses pressure, while in warm the air will expand.

VALVES



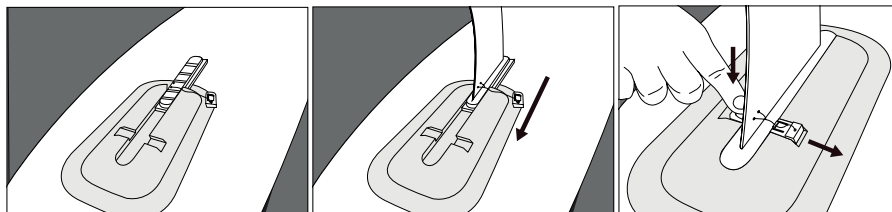
(1)



(2)

The valves are pre-assembled, you can leave them installed permanently. Unscrew the cap then place the pump onto the valve to inflate. To deflate the kayak; press on the nipple and twist it. (photo 2). Once deflated, screw the cap back on to close the valve.

ASSEMBLY OF STANDARD FINS



Remove the protective tab located in the groove by sliding it forward.

Insert the fin from the front into the groove.

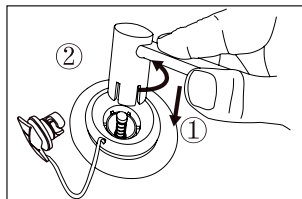
Position the safety tab transversely to the spoiler, until the locking clip appears on the other side.

DISASSEMBLY

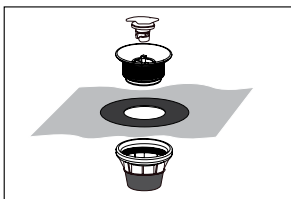
1. After using the kayak, it is important to drain any water that has collected inside. Open the drain plug and after most of the water has drained, turn the kayak upside down to drain the rest of the water.
2. After use, please clean your inflatable kayak so that it will not be damaged by sand, salt water or sunlight.
3. Clean the inflatable kayak with a mild detergent and water. (Do not use solvents as they can corrode surface materials or plastic parts of the kayak.)
4. Make sure the kayak is completely clean and dry before storing.
5. To deflate your kayak, press the valve to lock it open.
6. Once deflated, fold up the kayak starting with the side opposite the valve. Place it in the backpack and store it in a dry and ventilated place at over 15°C.

VALVE MAINTENANCE

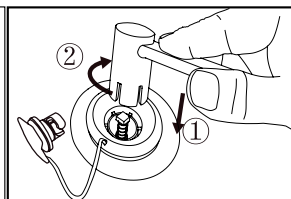
When using for the first time, it is imperative to check the tightness of the valve before use. If an air leak is present at this location, please follow the instructions below.



Open the cap and take the valve key (supplied). Position it in the valve and unscrew.



The valve consists of 3 parts, the top cap, the valve body, and the valve holder located in the kayak.

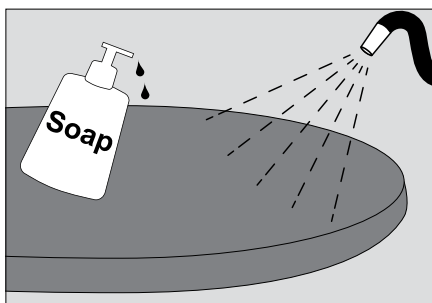


Reposition the valve body in its support.

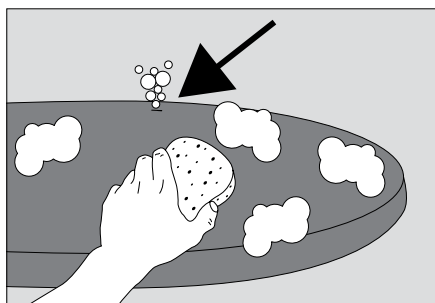
LEAK DETECTION



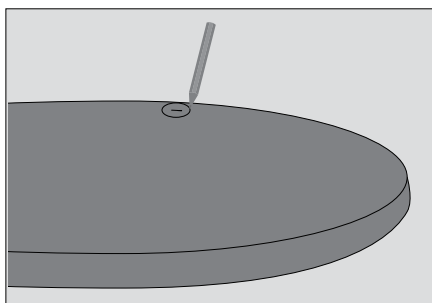
Take liquid soap, water and a sponge.



Cover the kayak with a mixture of soap and water.

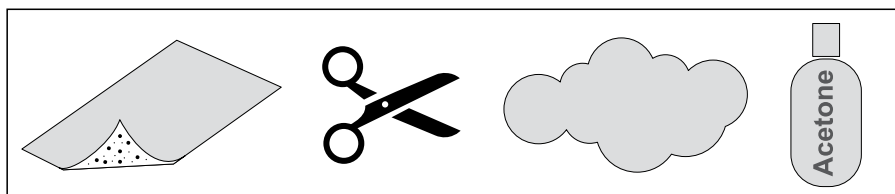


Wipe the entire kayak with a sponge, bubbles will form where the leak is.

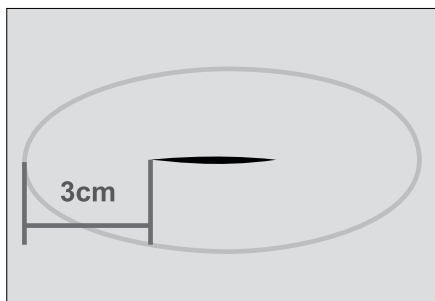


Rinse and dry your kayak and mark the location of the leak with a pen or felt tip pen.

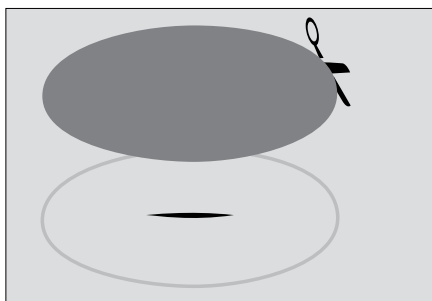
REPAIR KIT



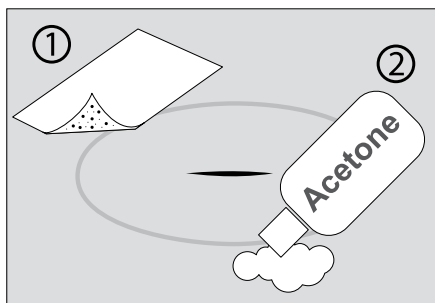
Take 160 sandpaper, scissors, cotton cloth, acetone and the repair kit included.



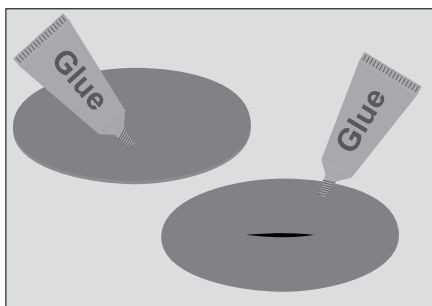
Define an area of at least 3cm around the leak and mark it with a marker.



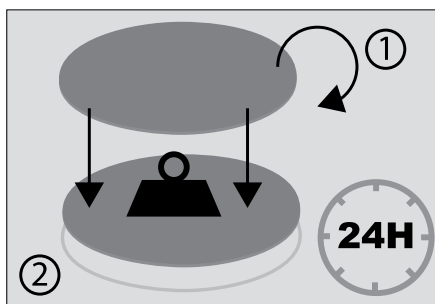
Cut a patch of the same size (in the repair kit included)



Wipe the entire area with sandpaper as well as the patch, then clean with a cloth dampened in acetone to remove any dust.



Use the glue and spread it over the defined area of the board as well as the entire patch. Wait 2-3 mins.



Put the patch on the board at once, and let it dry for 24 hours.

SPECIFICATIONS

Floor material:	Dropstitch
Tube material:	Laminated PVC
Length:	305 cm (+/- 3%)
Width:	85 cm (+/- 3%)
No of air chamber:	3
Max weight:	180 kg
Number of people:	1
Tube recommended pressure:	3.5 PSI
Floor recommended pressure:	8 PSI

WARRANTY INFORMATION

Our product is guaranteed to be free from manufacturing defects for a period of 12 Months.

If your product becomes defective during this period, Electus Distribution will repair, replace, or refund where a product is faulty; or not fit for intended purpose.

This warranty will not cover modified product; misuse or abuse of the product contrary to user instructions or packaging label; change of mind and normal wear and tear.

Our goods come with guarantees that cannot be excluded under the Australian Consumer Law. You are entitled to a replacement or refund for a major failure and for compensation for any other reasonably foreseeable loss or damage. You are also entitled to have the goods repaired or replaced if the goods fail to be of acceptable quality and failure does not amount to a major failure.

To claim warranty, please contact the place of purchase. You will need to show receipt or other proof of purchase. Additional information may be required to process your claim.

Any expenses relating to the return of your product to the store will normally have to be paid by you.

The benefits to the customer given by this warranty are in addition to other rights and remedies of the Australian Consumer Law in relation to the goods or services to which this warranty relates.

This warranty is provided by:

Electus Distribution

Address 46 Eastern Creek Drive, Eastern Creek NSW 2766

Ph. 1300 738 555