



MKC198

Junior Mask, Snorkel and Fins Set - Black



INSTRUCTION MANUAL

BOX CONTENTS

- 1 x Full Face Snorkel Mask
- 1 x EVA Protective Bag
- 1 x Mesh Bag
- 1 x Spare waterproof ring
- 1 x User Manual

WARNING

- It should be noted that we do not assume responsibility for bodily injury. Please snorkel carefully and safely.
- This product is designed for snorkeling purpose only.
- To wear the mask properly, it is essential to select the right size for your face size.
- Always inspect this product before use. Stop using it if you find cracks, punctures, irregularities, or any other damage.
- Do not jump into water from a platform/springboard wearing this mask as this may shatter the mask and cause serious bodily injury.
- Do not scuba dive, deep dive or swim intensively wearing this product. This product is not designed for such strenuous exercises.
- Do not use this product in dirty or muddy water.
- This product should not be used by those who are pregnant or suffer from heart disease, asthma, high blood pressure, otitis media.
- Do not disassemble this product, attempt to repair any part of this product, or attach unauthorized accessories to this product. This may lead to serious injuries and accidents and will render your warranty inapplicable.
- If you experience any dizziness, light-headedness, or shortness of breath while using this product, please stop using it immediately.
- Children to be supervised when in use.
- Before every use, make sure there is no sand or other debris on or in the snorkel mask and breathing tube.
- Always perform a seal test to check the state of the leak-proof seal. For more detailed instructions, please see the 'Seal Check' section.

FEATURES



Dry Top
Snorkel



Adjustable
Straps



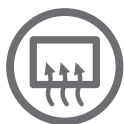
Leak-proof
Seal



GoPro
Mount



Chin Purge
Valve



Anti-Fog
Design



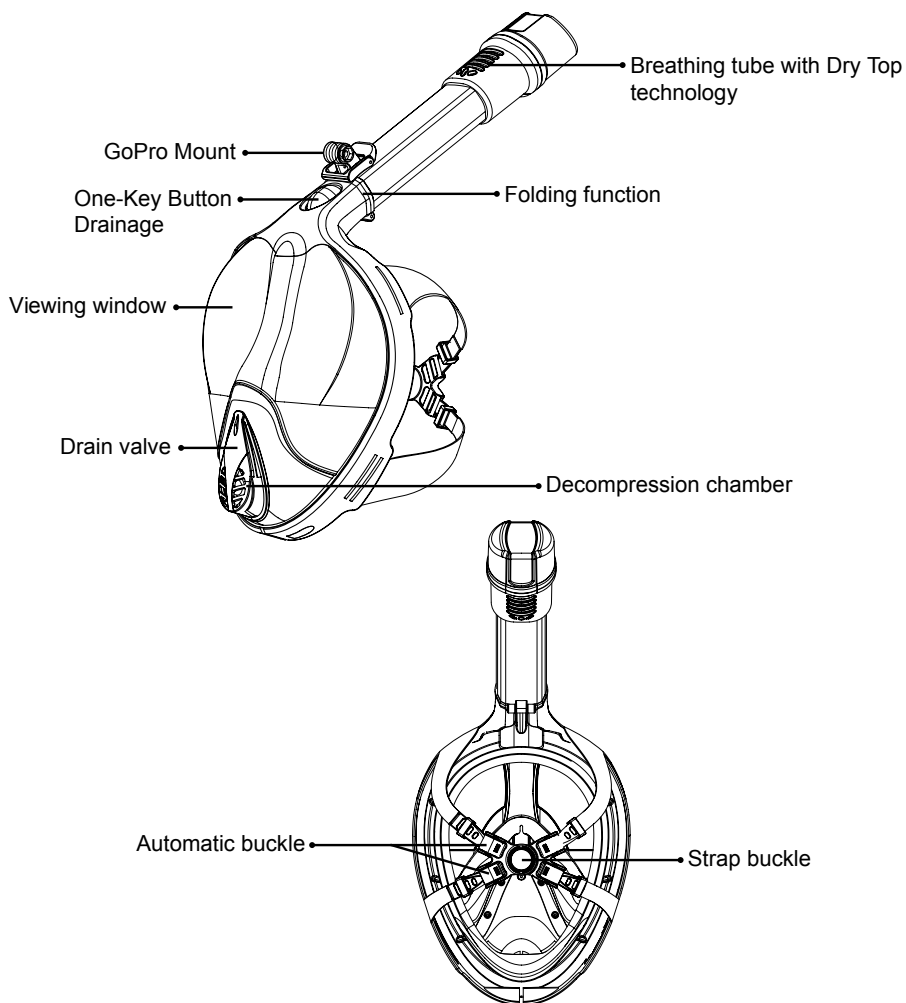
Full Face Coverage
& Clear 180° View



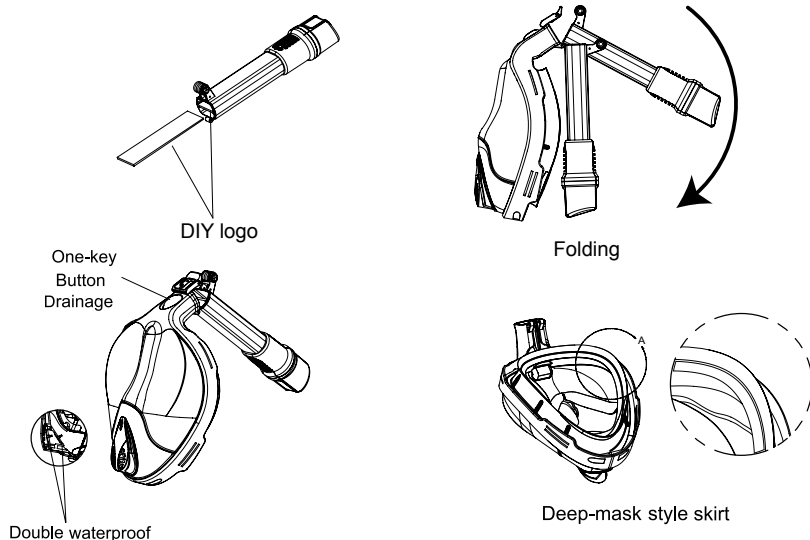
Folding

- You are safe with our injection-molded FDA liquid silicone (LSR). We have used this material on face mask and head bands for its superb transparency, soft texture and food-grade security approved by FDA.
- Drain water remains simply by raising your chin. The drain valve is located at the bottom of the mask.
- Anti-fog & Anti-UV PC viewing window (UV 400 protection).
- Push-button locking mechanism makes it easy to assemble and disassemble.
- Dry Top technology enables beginners to train their swimming skills without worries.
- Breathing underwater made easier: Larger-volume breathing tube provides extra air and thus allows you to stay underwater for a longer period. Drain valve with a shorter passage for less amount of CO₂ residue.
- Unique decompression chamber design stops the water from getting inside the mask.

PRODUCT OVERVIEW



FUNCTIONS

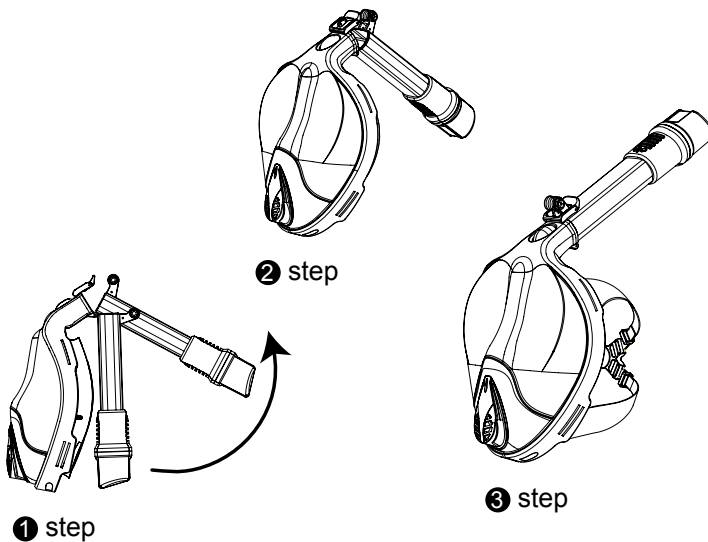


1. When snorkeling with the mask, you can breathe via your mouth and nose as usual.
2. The mask is NOT a professional mask for DEEP diving. To ensure your safety, it's not allowed to dive deeper than 3 m with the mask.
3. The mask can drain off water via its drainage button. If water leakage occurs, press the button to drain off the water from the mouth cover. If you can't breathe smoothly or too much water leaks, you need to release the back buckle to check the mask.
4. The mask design refers to the standard of professional snorkeling masks, including its waterproof level and remaining CO2 percentage. You can benefit from more invisible functions during the operation.

PRECAUTIONS

1. Confirm no sand or other stuff are trapped in the snorkel and the mask is clean. Otherwise, it will influence the using effect and the safety.
2. Immerse the mask in clean water to prevent the lens from fogging. Check the sealing according to the user manual and ensure the waterproof level is safe enough.

FOLDING AND ATTACHMENT



The full mask with a pivot is foldable. Do not shake the snorkel with force before you attach it to the mask, otherwise it will damage the connection place near the pivot.

When attaching the snorkel to the mask, align the snorkel with the outer mask frame and attach the buckle to the connector. Then, press the buckle to lock.

When folding the snorkel, lift one end of the buckle on the snorkel and tip the other end of the buckle. Do not tip with force so as not to damage the mask.

WEARING INSTRUCTIONS

1. Before wearing the mask, select an appropriate size fitting your face.
2. Before wearing the mask, attach it to your face and adjust the strap to an appropriate length that is not tight nor loose for your head. Therefore, the mask covers your face with a good seal.
3. Sealing test: Test before snorkeling. If water leaks from the mask, you need to adjust the mask again. To ensure its waterproof function, check whether the mask covers your face in place and the strap fits your head. To ensure sealing quality, you'd better remove your beard. Confirm no long hair or any other stuff are trapped between your face and the mask to make it waterproof.

CARE & STORAGE

- After every use, wash the product thoroughly with clean water.
- Air dry it completely before storage. Do not touch or wipe the inner side of window to avoid damaging the anti-fog coating.
- Store this product in a cool, dry area.
- Do not expose the product to direct sunlight so as to protect the anti-fog coating.
- To best preserve your snorkel mask, do not place it face down on any surface, as this may damage the viewing window and affect its clarity and quality.
- Avoid leaving the snorkel mask and breathing tube in sandy areas or environments to prevent debris from getting into the parts and affect the leak-proof seal.
- When storing, keep it away from colored items. This is because the silicone part could be dyed and thus loses its clarity.
- Fetch and place the mask carefully to prevent from damage or scratch. Rinse the product after every operation to ensure a smooth operation next time.

WARRANTY INFORMATION

Our product is guaranteed to be free from manufacturing defects for a period of 12 Months.

If your product becomes defective during this period, Electus Distribution will repair, replace, or refund where a product is faulty; or not fit for intended purpose.

This warranty will not cover modified product; misuse or abuse of the product contrary to user instructions or packaging label; change of mind and normal wear and tear.

Our goods come with guarantees that cannot be excluded under the Australian Consumer Law. You are entitled to a replacement or refund for a major failure and for compensation for any other reasonably foreseeable loss or damage. You are also entitled to have the goods repaired or replaced if the goods fail to be of acceptable quality and failure does not amount to a major failure.

To claim warranty, please contact the place of purchase. You will need to show receipt or other proof of purchase. Additional information may be required to process your claim.

Any expenses relating to the return of your product to the store will normally have to be paid by you.

The benefits to the customer given by this warranty are in addition to other rights and remedies of the Australian Consumer Law in relation to the goods or services to which this warranty relates.

This warranty is provided by:

Electus Distribution

Address 46 Eastern Creek Drive, Eastern Creek NSW 2766

Ph. 1300 738 555